

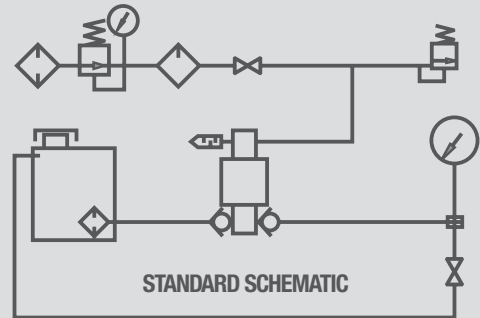
T-Series Pump Power Packs

HiP High Pressure Equipment
A GRACO Company



HiP packaged hydraulic power systems using our new high performance T-Series pumps are an excellent method to deliver high pressure hydraulic power to your field location. These turn-key systems only require a non-lubricated air supply to generate hydraulic power up to 68,000 psi and are designed for plain water or oil service. We offer a range of standard power packs that are typically in-stock or available with a short lead time, as well as custom power systems to satisfy your specific requirements. All HiP power packs are factory pressure tested prior to shipping.

T-Series Pump Power Packs can be used for a wide variety of high pressure applications such as bolt tensing, pressure testing, power pressing, jacking, lifting, hydraulic power units, proof testing components, valve actuation and many more.



Ordering Information

Part Number Example: 5065T-T6036-TB-SST This is a T60 series pump with a maximum outlet pressure of 36,500 psi and options of a tank bypass and 316 stainless steel tank.

5065T

All Models

Pump Series

T60	6" Motor Series Pump
T75	7-1/2" Motor Series Pump

T6036

Pump Model/Max Pressure

T60 Series		T75 Series	
03	3,200psi	05	5,000psi
05	4,800psi	07	7,400psi
06	6,300psi	10	10,000psi
10	10,000psi	16	15,750psi
12	12,500psi	19	19,500psi
16	16,250psi	25	25,500psi*
25	25,250psi	39	39,500psi*
36	36,500psi	57	57,100psi
58	58,000psi	68	68,000psi

TB-SST

Additional Extras

TB	Tank Bypass
IV	Isolation Valve
CRO	Chart Recorder Outlet
SST	Stainless Steel 316 Tank
USB	USB Transducer
ATEX	ATEX certified

* Optimum seal life is achieved at less than 80 cycles per minute. Intermittent duty above 30,000psi.

T-Series Pump Power Packs

Typical Pressure & Connection Sizes

T60 Series	Maximum Working Pressure		Air Inlet	Gauge Range	Outlet Connection
	psi	bar			
03	3,000	221	1/2" NPT(F)	0-5,000psi/bar	1/2" NPT(F)
05	4,800	331	1/2" NPT(F)	0-10,000psi/bar	1/2" NPT(F)
06	6,300	434	1/2" NPT(F)	0-10,000psi/bar	1/2" NPT(F)
10	10,000	689	1/2" NPT(F)	0-15,000psi/bar	HF9
12	12,500	862	1/2" NPT(F)	0-15,000psi/bar	HF9
16	16,250	1120	1/2" NPT(F)	0-20,000psi/bar	HF9
25	25,250	1740	1/2" NPT(F)	0-30,000psi/bar	HF4
36	36,500	2516	1/2" NPT(F)	0-40,000psi/bar	HF4
58	58,000	3998	1/2" NPT(F)	0-70,000psi/bar	HF4

T75 Series	Maximum Working Pressure		Air Inlet	Gauge Range	Outlet Connection
	psi	bar			
05	5,000	344	1/2" NPT(F)	0-10,000psi/bar	1/2" NPT(F)
07	7,400	510	1/2" NPT(F)	0-10,000psi/bar	1/2" NPT(F)
10	10,000	689	1/2" NPT(F)	0-15,000psi/bar	1/2" NPT(F)
16	15,750	1085	1/2" NPT(F)	0-20,000psi/bar	HF9
19	19,500	1344	1/2" NPT(F)	0-30,000psi/bar	HF9
25	25,500	1758	1/2" NPT(F)	0-30,000psi/bar	HF9
39	39,500	2723	1/2" NPT(F)	0-50,000psi/bar	HF4
57	57,100	3936	1/2" NPT(F)	0-70,000psi/bar	HF4
68	68,000	4688	1/2" NPT(F)	0-80,000psi/bar	HF4

Chart Recorder Port	HF4 plugged
Stainless Steel Tank	316 SS, mesh in tank filter, sight glass
USB Transducer	Range to suit pump max pressure. 400bar, 1500bar, 2000bar, 3000bar, 4000bar
Standard Seal Material	NBR
Optional Seal Materials	EPR available upon request FKM, FFKM available for pumps with maximum pressures of 16,250 or less

To learn more about **T-Series Pump Power Packs**, visit us online, email pumps@highpressure.com or give us a call today at **800-289-7447**.



High Pressure Equipment
A **GRACO** Company

www.HighPressure.com

1120 AHA

Delta Industrial Australia Pty Ltd
E: sales@deltaindustrial.com.au
W: www.deltaindustrial.com.au
P: +61 447 515 126

DELTA
INDUSTRIAL